

CAMPING INFORMATION

BRANDS HATCH

Food and Drink

Alongside a number of food and drink outlets operating at the venue during the event, the Kentagon and Hailwoods bar and restaurants will be open into the evening from Thursday through to Sunday, serving evening meals until 21:00 and drinks until midnight. Light snacks will still be available after 21:00.

There will be a fast food unit on both campsites open for breakfast on Saturday and Sunday, which will also open late on Saturday night.

There is no shop on site for purchasing self catering supplies but the nearest store is less than 5 minutes drive from the campsite. The Co-Op in Hever Road and can be accessed by exiting the campsite and heading south on the A20 towards West Kingsdown. Hever Road is located on the left just past the Texaco garage.

Evening Entertainment

Our evening schedule will keep you entertained into the night! Join us at the Kentagon Disco on Friday night with DJs playing the latest chart toppers mixed with classic floor fillers.

Then on Saturday we have a fantastic three band line-up in the marquee outside the Kentagon with live music from 19:00.

Fat Walter's Band: 19:00 – 20:25

Rocking to the beat of classic American good time rhythm and blues, St Albans based Fat Walter's Band mix it up with a skilful blend of famous and not-so-famous songs to really set the foot tapping and the joint jumping. Plaintive harmonica, scorching guitar and Will aka 'Fat' Walters' warm vocals all combine to deliver fun and great style in equal measure.

Delaney: 20:30 – 21:55

Blues/Rock/Jazz duo Jennie Delaney and Kirk Little, hailing from Kent and Sheffield respectively, first performed together in 2011 and have since played the Brighton Fringe, the Great Escape Festival, Sky 1 and the 2012 Olympic Games. They credit The Beatles, Billie Holliday, Johnny Cash and Nick Cave as their influences and as well as a strong repertoire of covers also write and record highly credible original material.

Muddy River Soul & Blues Band: 22:00 – 23:45

This seven piece band specialise in upbeat soulful classic music guaranteed to get the dance floor full and keep it that way all night! The band have regularly played together for over 12 years on the Kent circuit as well as London and all over the South East.

The Kentagon Disco also returns on Saturday night playing more dancefloor classics.

Items not allowed in the campsite

For everyone's safety and enjoyment, the following are prohibited:

- Fireworks
- Firewood
- Chinese lanterns
- Scooters/mini-motos/any vehicle not registered for the road

Any such items will be confiscated by the campsite security team.

Animals

Strictly no animals are allowed on site at any time. Assistance dogs are permitted when pre-arranged with the venue.

Safety

- Open fires are not permitted in the campsite.
- Barbecues are permitted but must be raised off the ground. Please dispose of coals and single-use barbecues (once cool) in the metal bins provided. Never leave a hot stove or barbecue unattended.
- Keep roadways and fire lanes clear at all times.
- Store fuel and generators away from ignition sources.
- Fire extinguishers are located at various fire points around the campsite. Use only in an emergency and raise the alarm immediately.
- Campsite speed limit is 10mph. Only drive if strictly necessary and watch for children.
- Secure tents and gazebos carefully in high winds.

Emergencies

The Fire, Security and Medical teams are present 24hrs a day whilst the campsite is open. They are there for the safety and well-being of all campers. Please respect any instructions given by them. Any campers found to be acting irresponsibly may be evicted from the campsite without refund of ticket fees.

Medical Emergency Call 07974 047929
Fire/Security Emergency Call 07919 218148

Waste & litter

Please make use of the rubbish bags provided and, when full, dispose of in the skips located around the campsite. More bags are available from security.

Valuables and Security

Please be vigilant against theft. Personal items and valuables are left at your own risk. MSV accept no responsibility for loss or damage sustained to these items.

MotorSport Vision Limited is not responsible for any loss, injury or damage howsoever caused to you except where any such loss, injury or damage is caused by the negligence of MotorSport Vision Limited, its employees or agents. Camping is allowed only within the designated areas and on purchase of an official camping ticket. Any tents pitched and caravans parked outside the designated areas will be removed. Official merchandising is only on sale inside the venue. Do not buy from unofficial vendors. No unauthorised trading is permitted within the venue or any official car parking facility. In the interest of public safety, MotorSport Vision Limited reserves the right to ask you to leave the venue at any time. Your statutory rights are not affected.

Welcome to MCE BSB – Brands Hatch. We hope you have a very enjoyable time this weekend. Please take a moment to read the following rules for our campsite.

Opening and departure times

The campsite opens at 12:00 on Thursday 18 July 2013. The campsite will close at 21:00 on Sunday 21 July 2013.

Campsite services will be unavailable after this time and campers remain by their own volition.

Directions

Please follow the square symbol on the highway signage for the campsite. The campsite is accessed via the Brands Hatch Main Entrance off the A20.

Campsite Areas

A family campsite is provided at this event. Persons wishing to be sited in this campsite should indicate this to our campsite admission team located at the entrance to the campsite. Family camping is allocated at the discretion of this team.

Please be aware that music systems are not to be used in the family campsite after 21:00.

A 'lively campsite' is also provided, and music systems are permitted in this area until 23:30. Any campers that persist in making excessive noise after this time may be evicted from the campsite without refund of ticket fees.

Private vehicles on campsite

Road-registered vehicles are permitted within the campsites, but scooters and mini-motos are not permitted. Please be considerate of others and keep vehicle movement to a minimum.

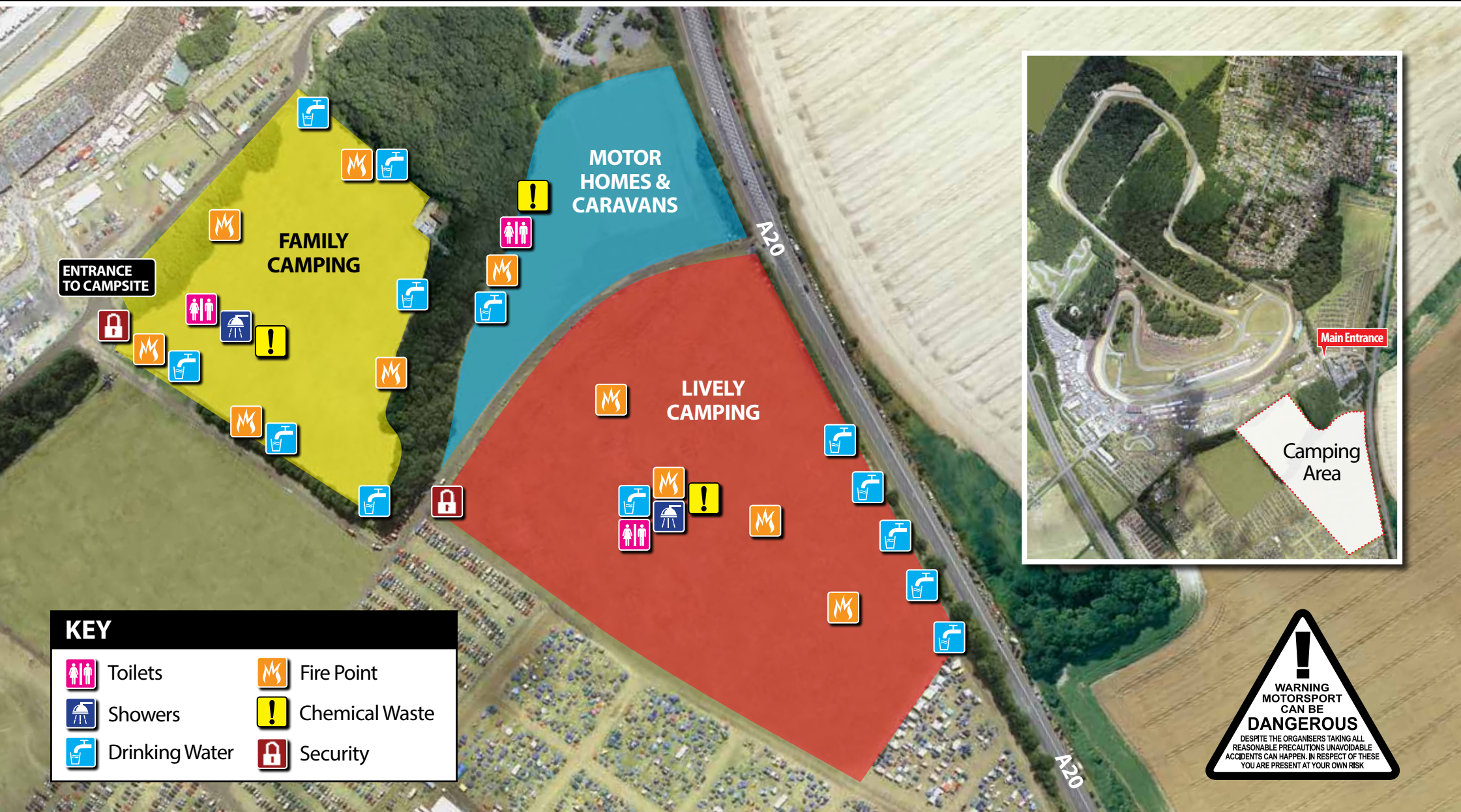
Sleeping in vans is not advised, but not prohibited.

Age restrictions

Campers under the age of 16 years must be accompanied by an appropriate adult.

CAMPSITE MAP

Medical Emergency Call 07974 047929
 Fire/Security Emergency Call 07919 218148



Report any problems or emergencies to a member of staff