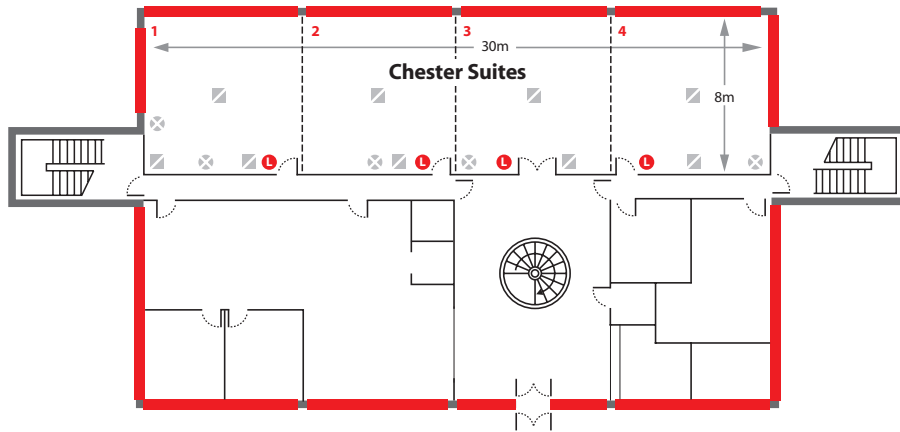






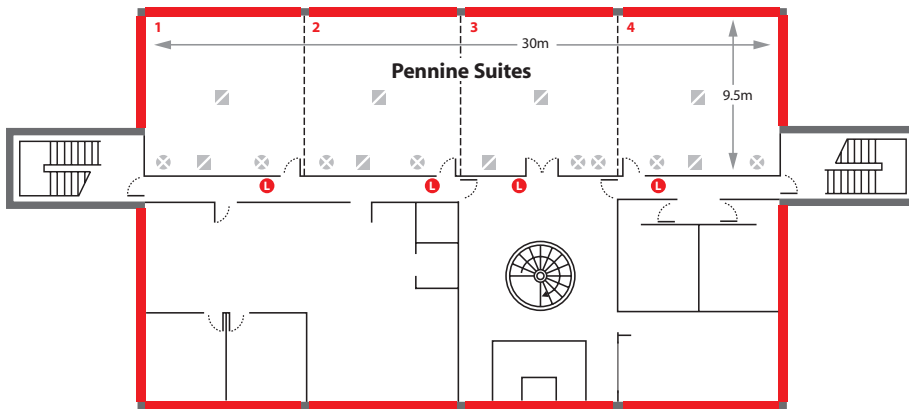
# Room Specifications



**Ground Floor**

**Key**

-  Light Switch
-  Dual electrical sockets
-  Windows
-  Removable partition walls



**First Floor**

Suite	Floor	Floor Space				Capacity						
		Length/m	Width/m	Area/sq m	Max Height/m	Theatre	Dinner	Dinner Dance	Cabaret	U-Shape	Boardroom	Classroom
Chester Suite 1	1	7.50	9.70	72.8	4.70	60	40		30	25	25	30
Chester Suite 2	1	7.40	9.70	71.8	4.70	60	40		30	25	25	30
Chester Suite 3	1	7.20	9.70	69.8	4.70	60	40		30	25	25	30
Chester Suite 4	1	7.65	9.70	54.2	4.70	60	40		30	25	25	30
All Chester Suites open	1	30.00	9.70	291.0	4.70	300	200	160	120	100		100
Pennine Suite 1	2	7.50	7.65	57.4	2.50	60	40		20	15	20	20
Pennine Suite 2	2	7.30	7.65	55.8	2.50	60	40		20	15	20	20
Pennine Suite 3	2	7.30	7.65	55.8	2.50	60	40		20	15	20	20
Pennine Suite 4	2	7.60	7.65	58.1	2.50	60	40		20	15	20	20
All Pennine Suites open	2	30.00	7.65	230.0	2.50	300	200	160	100	80		80

